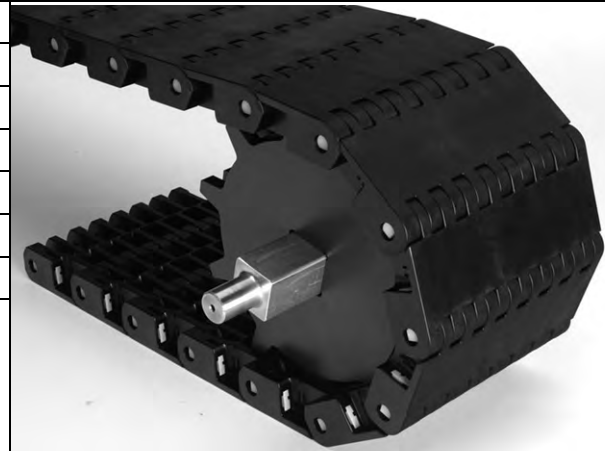


Mold to Width Flat Top

	in	mm
Pitch	3.0	76
Molded Widths	3.9	100
	7.9	200
Opening Size (approximate)	-	-
Open Area	0%	
Hinge Style	Closed	
Drive Method	Center/Hinge-Driven	



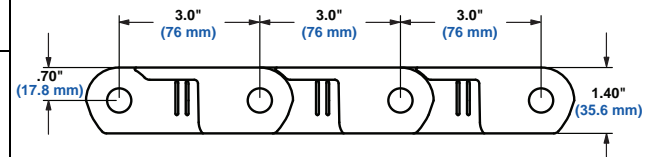
Product Notes

- Contact Intralox for precise belt measurements and stock status before designing equipment or ordering a belt.
- Smooth, closed upper surface.
- Available in high strength electrically conductive acetal, which has a surface resistivity of 10^5 ohms per square.
- Fully flush edges with Slidelox® rod retention feature.
- Slidelox is an acetal copolymer.
- Uses headless rods.



Additional Information

- See "Belt Selection Process" (page 7).
- See "Standard Belt Materials" (page 22).
- See "Special Application Belt Materials" (page 22)



Belt Data

Belt Material	Belt Width		Standard Rod Material Ø 0.50 in (12.7 mm)	BS Belt Strength		Temperature Range (continuous)		W Belt Weight	
	in	mm		lb	kg	°F	°C	lb/ft	kg/m
Acetal	3.9	100	Nylon	2,500	1,134	-50 to 200	-46 to 93	2.08	3.10
Acetal	7.9	200	Nylon	5,800	2,631	-50 to 200	-46 to 93	4.15	6.18
HS EC Acetal	3.9	100	Nylon	2,000	907	-50 to 200	-46 to 93	2.08	3.10
HS EC Acetal	7.9	200	Nylon	4,700	2,132	-50 to 200	-46 to 93	4.15	6.18