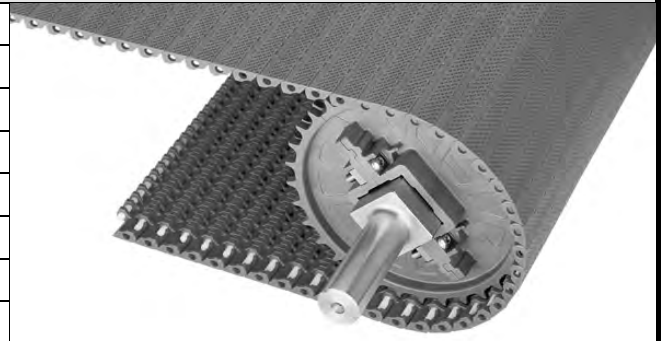


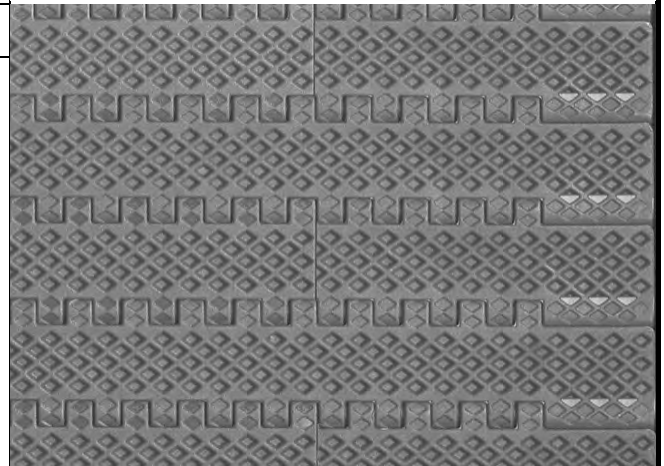
Embedded Diamond Top

	in	mm
Pitch	0.60	15.2
Minimum Width	3	76
Width Increments	1.00	25.4
Opening Size (approx.)	-	-
Open Area	0%	
Hinge Style	Open	
Drive Method	Hinge-driven	



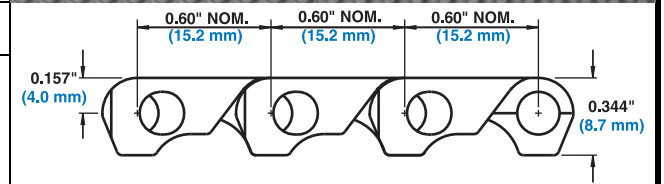
Product Notes

- **Contact Intralox for precise belt measurements and stock status before designing equipment or ordering a belt.**
- Lightweight with smooth, closed surface grid.
- Uses headless rods.
- Mini-pitch reduces chordal action and transfer dead plate gap.
- Can be used over 0.875 in (22.2 mm) diameter nosebar for tight transfers.
- For information regarding sprocket placement, refer to the Center Sprocket Offset chart on page 410.



Additional Information

- See "Belt Selection Process" (page 7)
- See "Standard Belt Materials" (page 22)
- See "Special Application Belt Materials" (page 22)
- See "Friction factors" (page 26)



Belt Data

Belt Material	Standard Rod Material Ø 0.18 in (4.6 mm)	BS Belt Strength ^a		Temperature Range (continuous)		W Belt Weight	
		lb/ft	kg/m	°F	°C	lb/ft ²	kg/m ²
Polyethylene	Polyethylene	300	450	-50 to 150	-46 to 66	0.96	4.69

a. When using steel sprockets, the belt strength for polyethylene is 240 lb/ft (360 kg/m).