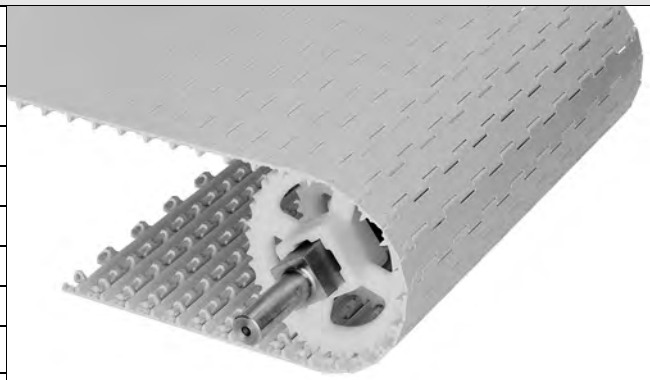


SeamFree™ Minimum Hinge Flat Top

	in	mm
Pitch	1.00	25.4
Minimum Width	4	102
Width Increments	1.00	25.4
Opening Sizes (approx.)	-	-
Open Area	0%	
Hinge Style	Open	
Drive Method	Center-Driven	

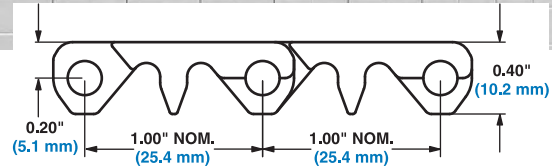
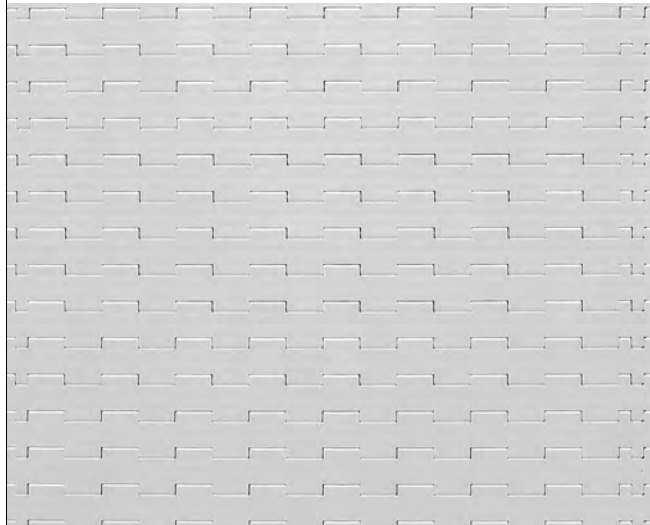


Product Notes

- **Contact Intralox for precise belt measurements and stock status before designing equipment or ordering a belt.**
- Smooth, closed upper surface with fully flush edges.
- Uses headed rods.
- Cam-link designed hinges - expose more hinge and rod area as the belt goes around the sprocket. This exclusive Intralox feature allows unsurpassed cleaning access to this area.
- Fully sculpted and radiused corners - no pockets or sharp corners to catch and hold debris.
- The drive bar on the underside of S1650 SeamFree Minimum Hinge Flat Top, in combination with the patent pending flume feature, channels water and debris to the outside of the belt for easier, faster cleanup. The drive bar's effectiveness has been proven both in-house and in field tests.
- Designed for use with S1600 Angled EZ Clean™ sprockets but compatible with standard S1600 EZ Clean sprockets as well.
- Belts over 18 in (457 mm) are built with multiple modules per row, but seams are minimized.

Additional Information

- See "Belt Selection Process" (page 7)
- See "Standard Belt Materials" (page 22)
- See "Special Application Belt Materials" (page 22)
- See "Friction factors" (page 26)



Belt Data							
Belt Material	Standard Rod Material Ø 0.18 in (4.6 mm)	BS Belt Strength		Temperature Range (continuous)		W Belt Weight	
		lb/ft	kg/m	°F	°C	lb/ft²	kg/m²
Acetal	Acetal	350	520	-50 to 200	-46 to 93	1.47	7.18
Acetal	Polypropylene	325	480	34 to 200	1 to 93	1.40	6.84
Acetal	Polyethylene	225	330	-50 to 150	-46 to 66	1.40	6.83
Polypropylene	Polypropylene	225	330	34 to 220	1 to 104	0.91	4.44
X-Ray Detectable Acetal	Acetal	350	521	-50 to 200	-46 to 93	1.74	8.50