

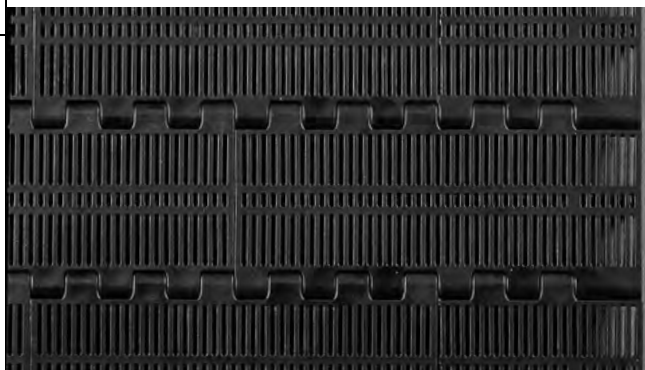
Mesh Top™

	in	mm
Pitch	2.50	63.5
Minimum Width	5	127
Width Increments	1.00	25.4
Opening Size (approximate)	0.07 × 0.75	1.7 × 19.1
Open Area	32%	
Hinge Style	Open	
Drive Method	Center-driven	



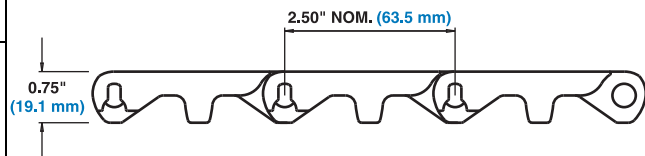
Product Notes

- **Contact Intralox for precise belt measurements and stock status before designing equipment or ordering a belt.**
- Fully flush edges with recessed rods prevent edge damage and rod migration.
- Uses headless rods.
- Available with flights and other Series 1800 accessories.



Additional Information

- See "Belt Selection Process" (page 7)
- See "Standard Belt Materials" (page 22)
- See "Special Application Belt Materials" (page 22)
- See "Friction factors" (page 26)



Belt Data

Belt Material	Standard Rod Material Ø 0.312 in (7.9 mm)	BS		Temperature Range (continuous)		W	
		Belt Strength		°F	°C	Belt Weight	
		lb/ft	kg/m			lb/ft ²	kg/m ²
Polypropylene	Polypropylene	800	1190	34 to 220	1 to 104	1.44	7.03
UV Resistant PP	Acetal	1100	1640	34 to 200	1 to 93	1.55	7.56
UV Resistant Acetal	Acetal	1500	2230	-50 to 200	-46 to 93	2.27	11.08
Polyethylene	Polyethylene	400	595	-50 to 150	-46 to 66	1.50	7.32
Nylon	Nylon	1000	1488	-50 to 240	-46 to 116	1.81	8.84