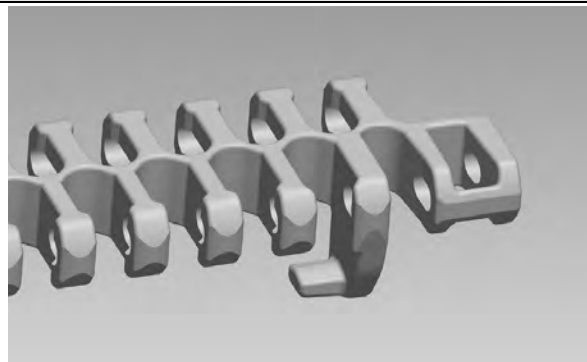
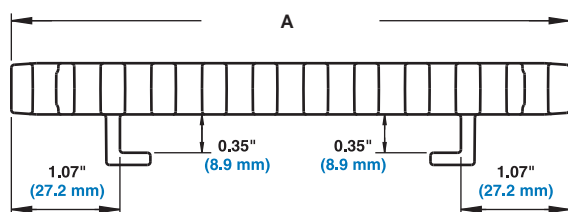


Hold Down Guides (2.2 Only)

- Hold down guides are on the bottom of the belt for use when the belt edges need to be clear. Also available on friction top modules.
- Hold down guides provide the ability to run two belts next to each other without a large gap in between.
- The belt edge is smooth for reduced friction, and is relatively thick to provide wear resistance and protection for the rod retention.
- The minimum nosebar diameter is 1.5 in (38.1 mm)
- Hold down guides cannot be used with 2 in and 2.9 in pitch diameter sprockets or 3.9 in pitch diameter square bore sprockets.
- Other sprocket PDs with large bores may not produce enough clearance between the hold down guide and shaft. Subtracting bore size from the PD easily identifies these sprockets. If the number is less than 2.0 in (51 mm), this sprocket cannot be used with hold down guides.



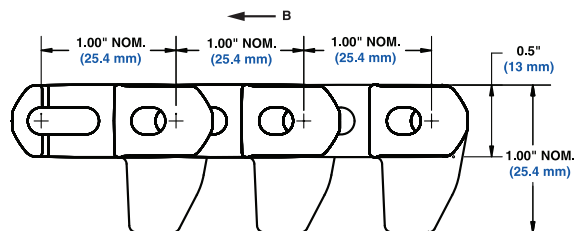
Front view



A - Belt width

Note: Hold down guides are not recommended for low-tension capstan drive spiral applications.

Side view



B - Preferred direction for flat turning applications

Fig. 2-3 SERIES 2400 HOLD DOWN GUIDES FOR FLAT TURNS