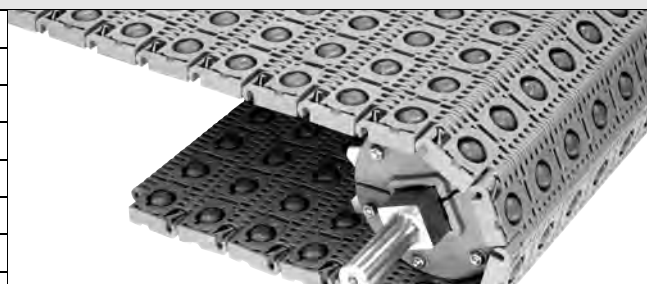


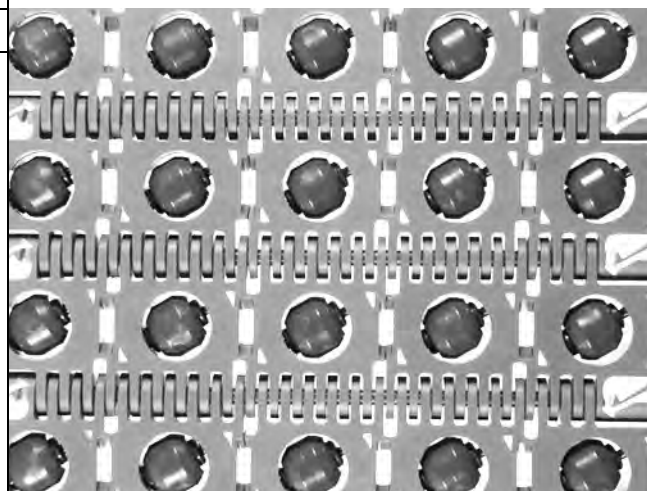
30° Angled Roller™

	in	mm
Pitch	2.00	50.8
Minimum Width	6	152
Width Increments	2.00	50.8
Opening Size (approximate)	-	-
Open Area	11%	
Hinge Style	Closed	
Drive Method	Center-driven	



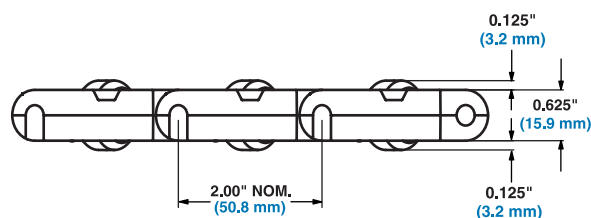
Product Notes

- **Contact Intralox for precise belt measurements and stock status before designing equipment or ordering a belt.**
- This belt uses Activated Roller Belt™ technology.
- Grey polyurethane rollers with an acetal core are available. Axles are stainless steel.
- Uses headless rods.
- Rollers are skewed 30° from the direction of belt travel.
- Grey polyurethane rollers can run on a standard flat continuous carryway. A chevron carryway is not recommended.
- Belt can be supported using parallel wearstrips placed in between belt rollers. Contact Intralox Customer Service for more information.
- 2 in (50.8 mm) roller spacing.
- When belt rollers are in motion, product moves faster than the speed of the belt. When belt rollers do not rotate, product travels at belt speed.
- Product behavior varies depending on shape and weight of product, conveyor design, and belt speed. Intralox can help you reach a more accurate estimate of product behavior based on product and conveyor characteristics. Contact Intralox Customer Service for more information.
- Centering configuration is possible using two belts with rollers oriented towards the center of the conveyor.
- Alignment belts on a flat continuous carryway require a side wearstrip and the belt should be installed to run flush along this wearstrip.
- Custom belts consisting of any combination of 0°, 30°, 45°, or 60° are available. Custom belts can also include rollers oriented in different directions. Contact Intralox Customer Service for more information.
- Angled Roller Belt will not work with the 4.0 in (102 mm) pitch diameter split sprocket and all 5.2 in (132 mm) pitch diameter sprockets with 2.5 in and 60 mm square bores.
- Minimum belt width for polyethylene is 8 in (203 mm). Polyethylene belts between 8 in (203 mm) to 10 in (254 mm) wide should be de-rated to 450 lb/ft. (670 kg/m).
- If any moisture is present, then the low temperature limit of the polyethylene belt is 34° F (1° C).
- Polyethylene belts require ultra abrasion resistant polyurethane sprocket on the drive shaft. Any sprocket can be used on the idle shaft except for sprockets with low back tension teeth.



Additional Information

- See "Belt Selection Process" (page 7)
- See "Standard Belt Materials" (page 22)
- See "Special Application Belt Materials" (page 22)
- See "Friction factors" (page 26)



Belt Data

Belt Material	Standard Rod Material Ø 0.24 in (6.1 mm)	BS		Temperature Range (continuous)		W	
		Belt Strength	Belt Strength	°F	°C	Belt Weight	Belt Weight
		lb/ft	kg/m			lb/ft²	kg/m²
Polypropylene/Grey Polyurethane	Nylon	1600	2381	34 to 120	1 to 49	2.64	12.89
Polyethylene/Grey Polyurethane	Nylon	500	744	17 to 150	-8 to 65	2.93	14.31