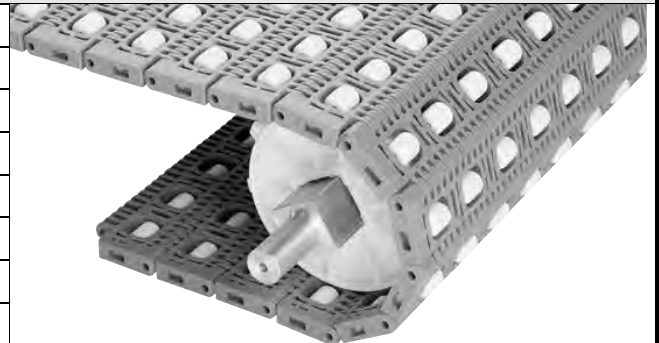


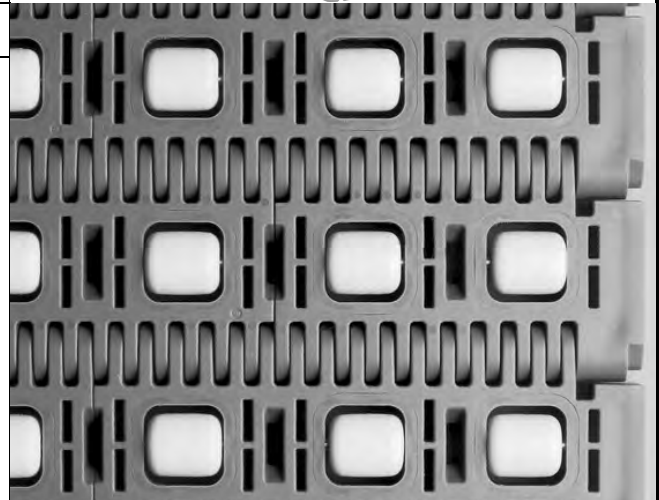
Roller Top™

	in	mm
Pitch	2.00	50.8
Minimum Width	6	152
Width Increments	2.00	50.8
Opening Size (approximate)	-	-
Open Area	18%	
Hinge Style	Closed	
Drive Method	Center-driven	



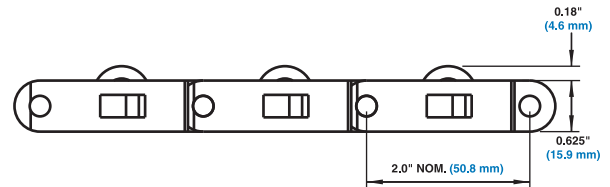
Product Notes

- **Contact Intralox for precise belt measurements and stock status before designing equipment or ordering a belt.**
- Slidelox® flush edges.
- Acetal rollers, stainless steel axles.
- Allows for low back pressure accumulation.
- Uses headless rods.
- Roller diameter - 0.70 in (17.8 mm). Roller length - 0.825 in (20.9 mm).
- Standard roller indent is 0.90 in (23 mm)
- Distance to centerline of first roller is 1.3 in (33 mm), spacing between first and second roller is 1.8 in (46 mm). Spacing between all other rollers is 2 in (50.8 mm).
- Slidelox is glass reinforced polypropylene.



Additional Information

- See "Belt Selection Process" (page 7)
- See "Standard Belt Materials" (page 22)
- See "Special Application Belt Materials" (page 22)
- See "Friction factors" (page 26)



Belt Data

Belt Material	Standard Rod Material Ø 0.24 in (6.1 mm)	BS Belt Strength		Temperature Range (continuous)		W Belt Weight	
		lb/ft	kg/m	°F	°C	lb/ft²	kg/m²
Polypropylene	Nylon	2200	3270	34 to 200	1 to 93	2.44	11.94