

Non Skid

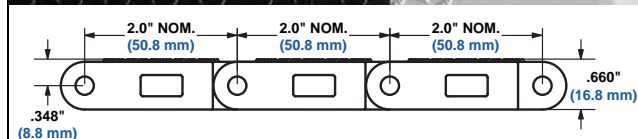
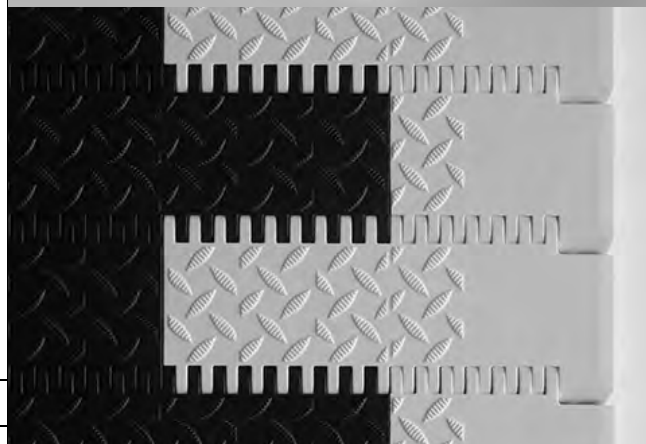
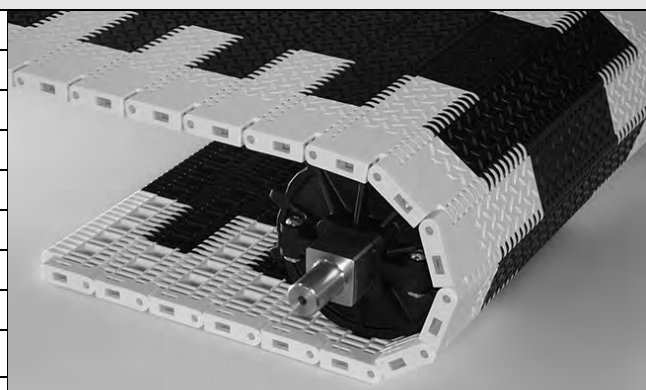
	in	mm
Pitch	2.00	50.8
Minimum Width	5.00	127
Width Increments	1.00	25.4
Opening Sizes (approx.)	—	—
Open Area	0%	
Hinge Style	Closed	
Drive Method	Center-Driven	

Product Notes

- **Contact Intralox for precise belt measurements and stock status before designing equipment or ordering a belt.**
- Diamond tread pattern provides a non-skid walking surface to increase safety.
- Available in yellow edges. Staggered yellow edges make it easy to distinguish the moving belt from the stationary floor.
- Wheel chocks are available. Series 4500 Flat Top modules are used to mount the wheel chocks.
- Edges have Flat Top surface (no tread pattern). Flat Top indent is 2.0 in (50 mm) from edge of belt.
- Fully flush edges with Slidelox® rod retention feature.
- Slidelox is a glass-reinforced polypropylene.
- Uses headless rods.

Additional Information

- See “Belt Selection Process” (page 7)
- See “Standard Belt Materials” (page 22)
- See “Special Application Belt Materials” (page 22)
- See “Friction factors” (page 26)



Belt Data

Belt Material	Standard Rod Material Ø 0.24 in (6.1 mm)	BS		Temperature Range (continuous)		W	
		Belt Strength	Belt Strength	°F	°C	Belt Weight	Belt Weight
		lb/ft	kg/m			lb/ft ²	kg/m ²
Acetal	Nylon	4400	6548	-50 to 200	-46 to 93	3.09	15.09
HSEC Acetal	Nylon	4100	6101	-50 to 200	-46 to 93	3.10	15.14
AC/EC	Nylon	4400	6548	-50 to 200	-46 to 93	3.10	15.14
Polypropylene	Nylon	3900	5804	34 to 200	1 to 93	1.98	9.67
Polypropylene	Polypropylene	2500	3720	34 to 220	1 to 104	1.86	9.08
FR Anti-Static	Nylon	2000	2976	-50 to 150	-46 to 66	3.00	14.65