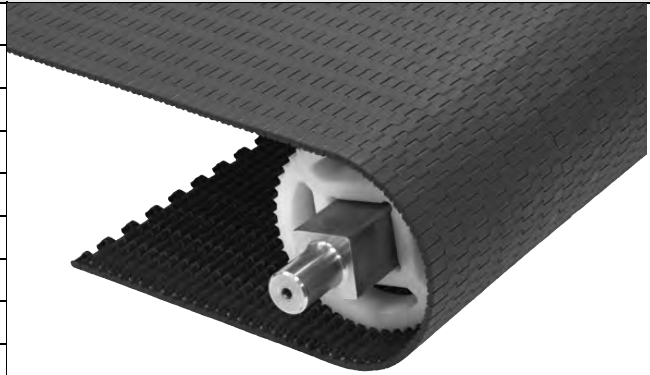


Tight Transfer Flat Top

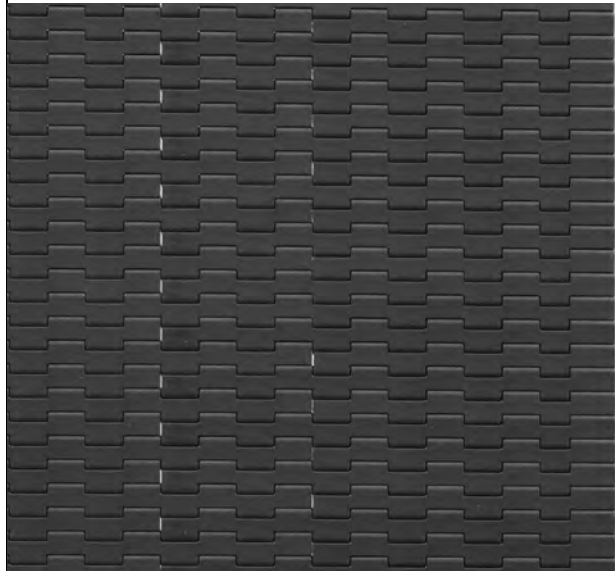
	in	mm
Pitch	0.315	8.0
Minimum Width	8	203.2
Width Increments	1	25.4
Open Area	0%	
Hinge Style	Open	
Drive Method	Center/Hinge	



Product Notes

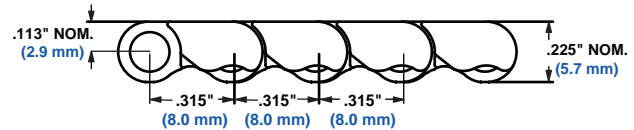
- **Contact Intralox for precise belt measurements and stock status before designing equipment or ordering a belt.**
- Designed for orientation-sensitive transfers.
- Conveys product over 0.25 in (6.4 mm) diameter nosebar.
- Uses headless rods.
- Reduced noise level* at higher speeds.
- Standard stainless steel retainer rings are recommended for use with 2.4 in and 3.2 in PD sprockets; corresponding heavy-duty retainer rings may also be used.
- Smooth, closed upper surface with fully flush edges and headless rods.
- Fully sculpted and radiused corners.
- Back tension required: 12 lb./ft. of belt width (17.9 kg/m).

*Compared to S1100 Flat Top in acetal and S1500 Flush Grid in acetal.



Additional Information

- See "Belt Selection Process" (page 7)
- See "Standard Belt Materials" (page 22)
- See "Special Application Belt Materials" (page 22)
- See "Friction factors" (page 26)



Belt Data

Base Belt Material	Standard Rod Material Ø 0.14 in (3.6 mm)	BS Belt Strength		Temperature Range (continuous)		W Belt Weight	
		lb/ft	kg/m	°F	°C	lb/ft ²	kg/m ²
Acetal	Acetal	150	220	-50 to 200	-46 to 93	1.10	5.37
HHR Nylon	Nylon	85	126	-50 to 240	-46 to 116	0.85	4.15