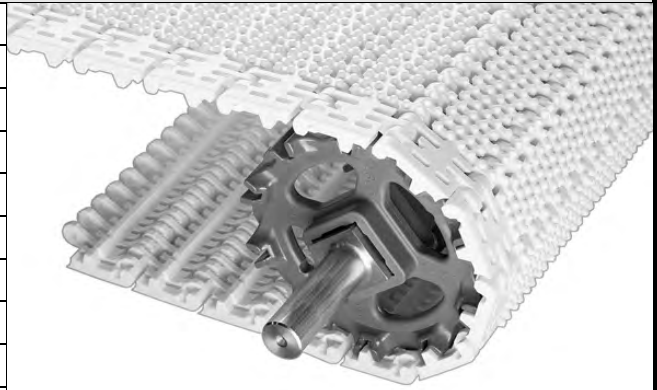


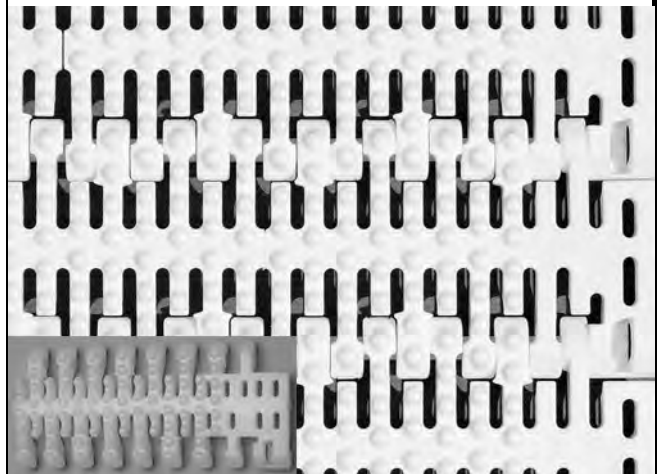
Flush Grid Nub Top™

	in	mm
Pitch	2.00	50.8
Minimum Width	4.6	117
Width Increments	0.66	16.8
Opening Size (approximate)	0.15 × 0.90	3.8 × 22.9
Open Area	27%	
Product Contact Area	15%	
Hinge Style	Open	
Drive Method	Center-driven	

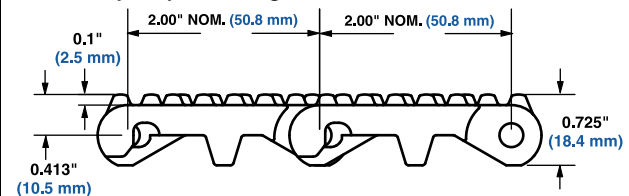


Product Notes

- **Contact Intralox for precise belt measurements and stock status before designing equipment or ordering a belt.**
- Standard Nub indent is 1.3 inches (33.0 mm).
- Uses headless rods.
- Nub pattern reduces contact between belt surface and product.
- Can be fitted with Series 800 Flush Grid flights only.
- Manufactured in acetal and polypropylene.
- Recommended for products large enough to span the distance between the nubs.
- Nub pattern is continuous over the surface of the belt, even over the hinges.
- Perforations on polyethylene edge modules are slightly different. See inset picture.



Inset: Polyethylene edge module



Additional Information

- See "Belt Selection Process" (page 7)
- See "Standard Belt Materials" (page 22)
- See "Special Application Belt Materials" (page 22)
- See "Friction factors" (page 26)

Belt Data

Belt Material	Standard Rod Material Ø 0.24 in (6.1 mm)	BS Belt Strength		Temperature Range (continuous)		W Belt Weight	
		lb/ft	kg/m	°F	°C	lb/ft ²	kg/m ²
Polypropylene	Polypropylene	800	1190	34 to 220	1 to 104	1.56	7.62
Acetal	Polyethylene	1000	1490	-50 to 150	-46 to 66	2.36	11.52
Acetal	Polypropylene	1000	1490	34 to 200	1 to 93	2.36	11.52
Polyethylene	Polyethylene	500	750	-50 to 150	-46 to 66	1.85	9.03